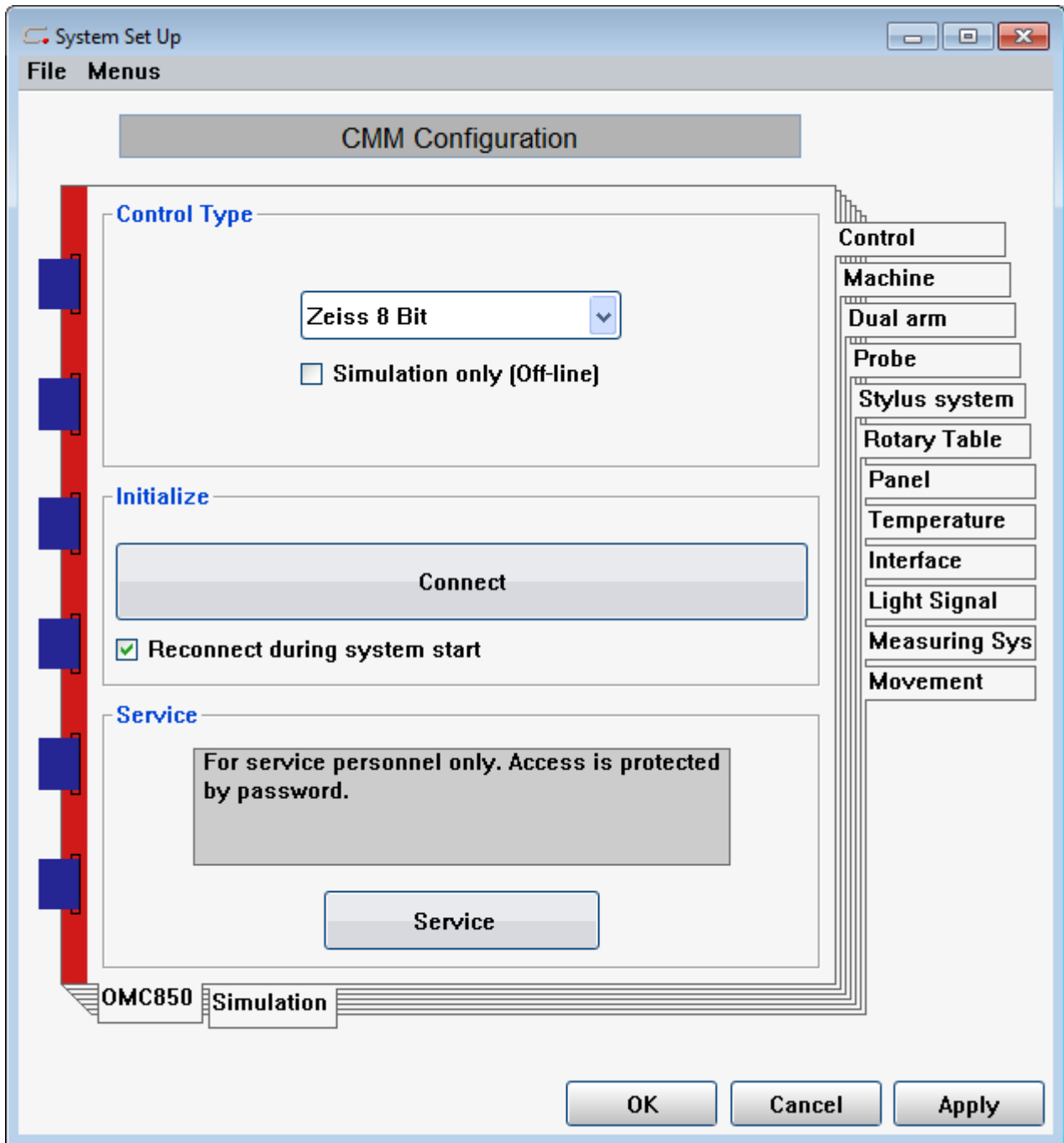


Information on Zeiss OMC 850 Seriennummer 88341



CMM Configuration

Machine Type



MC

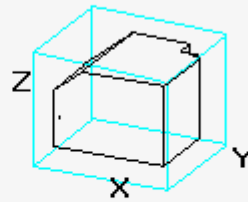
Move To Machine Home

X 30.0000 mm
Y -30.0000 mm
Z -30.0000 mm

Measuring Volume

Default

X 820.0000 mm
Y 700.0000 mm
Z 480.0000 mm



OMC850 Simulation

Control

Machine

Dual arm

Probe

Stylus system

Rotary Table

Panel

Temperature

Interface

Light Signal

Measuring Sys

Movement

OK

Cancel

Apply

CMM Configuration



Settings only have to be made here if a horizontal arm measuring machine has been selected under "Machine"

Control

Machine

Dual arm

Probe

Stylus system

Rotary Table

Panel

Temperature

Interface

Light Signal

Measuring Sys

Movement

OMC850

Simulation

OK

Cancel

Apply

CMM Configuration

Sensors

ST

Diameter

Max 90.00 mm

Upon Probing...

- Acoustic signal
- PC acoustic signal



Control

Machine

Dual arm

Probe

Stylus system

Rotary Table

Panel

Temperature

Interface

Light Signal

Measuring Sys

Movement

OMC850 Simulation

OK

Cancel

Apply

CMM Configuration

MasterProbe

Only for index holder, e.g. RDS, DSE
MasterProbe for calculating the navigation

	In sensor system	Machine mapping
Xs :	<input type="text" value="0.0000"/>	<input type="text" value="+Xm"/>
Ys :	<input type="text" value="0.0000"/>	<input type="text" value="-Zm"/>
Zs :	<input type="text" value="0.0000"/>	<input type="text" value="+Ym"/>

Default values are determined by the software

Default values see User's Guide

Set Global Monitoring Criteria

Define and Activate Limit Values

Stylus check during CNC start

Control

Machine

Dual arm

Probe

Stylus system

Rotary Table

Panel

Temperature

Interface

Light Signal

Measuring Sys

Movement

OMC850

Simulation

OK

Cancel

Apply

CMM Configuration

- No rotary table available
- Fitted rotary table available
- Transportable rotary table available

- Connect rotary table to control
- Activate rotary table functionality



RT Home Position

Control

Machine

Dual arm

Probe

Stylus system

Rotary Table

Panel

Temperature

Interface

Light Signal

Measuring Sys

Movement

OMC850

Simulation

OK

Cancel

Apply

System Set Up



File Menu

CMM Configuration

Panel

Alpha



Control

Machine

Dual arm

Probe

Stylus system

Rotary Table

Panel

Temperature

Interface

Light Signal

Measuring Sys

Movement

OMC850

Simulation

OK

Cancel

Apply

CMM Configuration

Coefficients

X Scale	<input type="text" value="7.8000"/>	μC
Y Scale	<input type="text" value="7.8000"/>	μC
Z Scale	<input type="text" value="7.8000"/>	μC

Control

Machine

Dual arm

Probe

Stylus system

Rotary Table

Panel

Temperature

Interface

Light Signal

Measuring Sys

Movement

OMC850 Simulation

OK

Cancel

Apply

CMM Configuration

Interface Type

for

Control	▲
Panel	▼

HPIB (IEEE) ▼

Address

HPIB,8

Control

Machine

Dual arm

Probe

Stylus system

Rotary Table

Panel

Temperature

Interface

Light Signal

Measuring Sys

Movement

OMC850 Simulation

OK

Cancel

Apply

CMM Configuration

Control Light Signal



Control

Machine

Dual arm

Probe

Stylus system

Rotary Table

Panel

Temperature

Interface

Light Signal

Measuring Sys

Movement

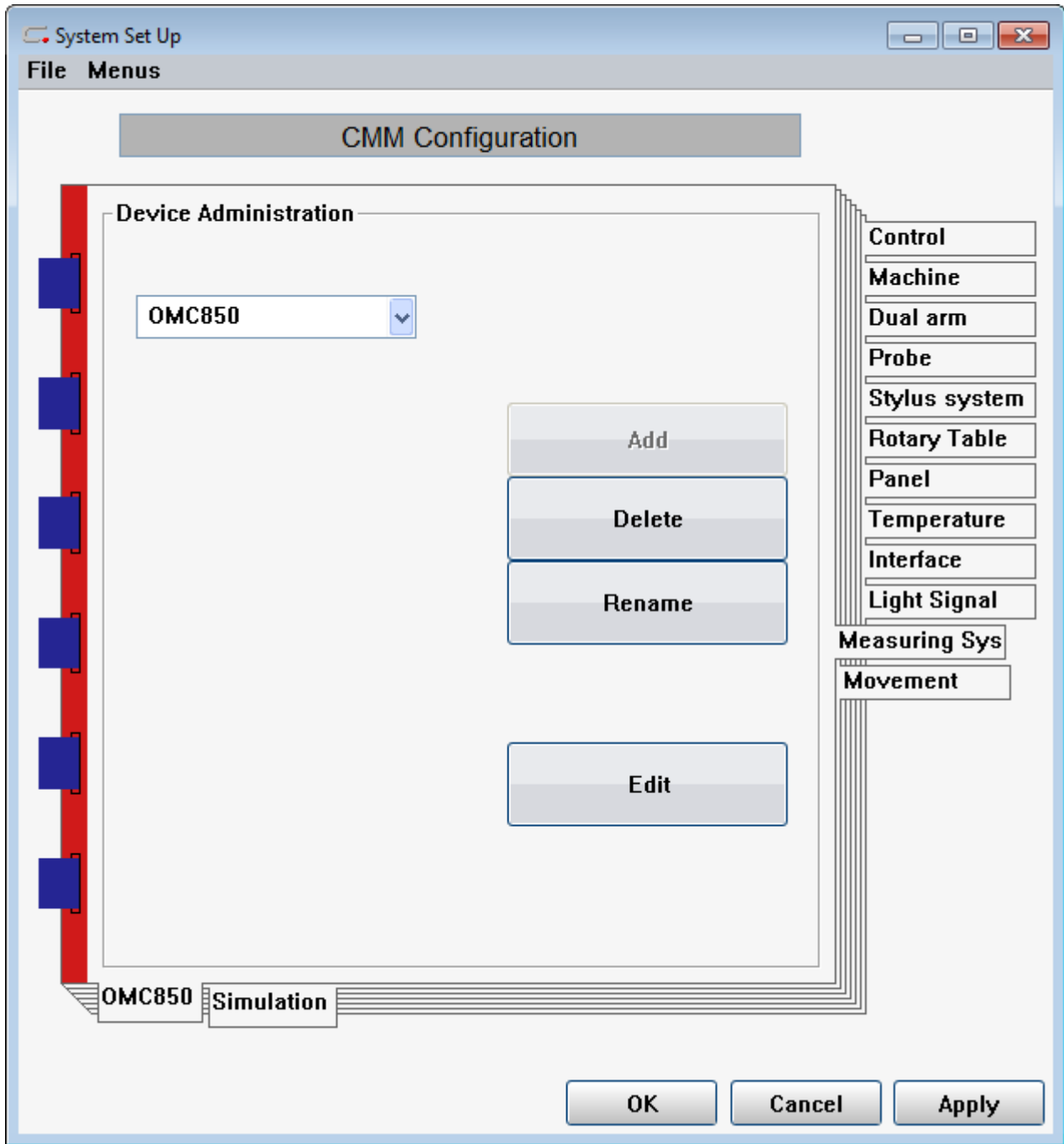
OMC850

Simulation

OK

Cancel

Apply



CMM Configuration

Short travel during qualification



- Control
- Machine
- Dual arm
- Probe
- Stylus system
- Rotary Table
- Panel
- Temperature
- Interface
- Light Signal
- Measuring Sys

Movement

OMC850 Simulation

OK

Cancel

Apply